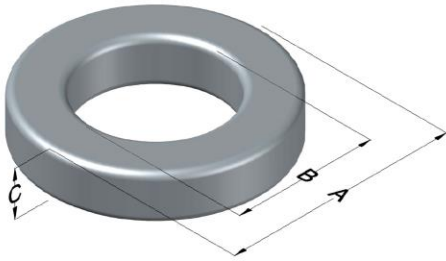




C058195A2

110 Delta Drive
 Pittsburgh, PA 15238
 NAFTA Sales: (1)800-245-3984
 HK Sales : (852)3102-9337
 magnetics@spang.com
 www.mag-inc.com



High Flux Permeability (μ)	A_L (nH/T ²)	Core Marking			Coating Color
		Lot Number	Part Number	Inductance Grade	
125	287 \pm 8%	XXXXXX	58195A2	X	Khaki

Dimensions	Uncoated		Coated Limits			Packaging
	(mm)	(in)	(mm)	(in)		
OD (A)	57.20	2.250	58.04	2.285	max	Cardboard cut-outs Box Qty= 80 pcs
ID (B)	26.40	1.039	25.57	1.007	min	
HT (C)	15.2	0.600	16.2	0.635	max	

Electrical Characteristics			Physical Characteristics						
Watt Loss @ 100 kHz, 100mT max (mW/cm ³)	DC Bias min (oersteds)		Voltage Breakdown wire to wire min (V _{AC})	Break Strength min (kg)	Window Area W _A (mm ²)	Cross Section A _e (mm ²)	Path Length L _e (mm)	Volume V _e (mm ³)	Weight (g)
	1000	80%							
	46.0	81.0							

Winding Information					Temperature Rating	
Winding Length Per Turn				Wound Coil Dimensions (mm)		Curie Temp: 500°C
Winding Factor	(mm)	Winding Factor	(mm)	40% Winding Factor		Coating Temp (Continuous up to): 200°C
				OD	62.0	Notes:
				HT	24.0	
				Completely Full Window		
				Max OD	75.7	
				Max HT	34.0	
				Surface Area (mm ²)		
				Unwound Core	8,500	
				40% Winding Factor	12,000	

