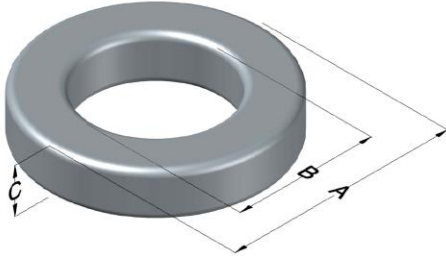




C058118A2

110 Delta Drive
 Pittsburgh, PA 15238
 NAFTA Sales: (1)800-245-3984
 HK Sales : (852)3102-9337
 magnetics@spang.com
 www.mag-inc.com



High Flux Permeability (μ)	A_L (nH/T ²)	Core Marking			Coating Color
		Lot Number	Part Number	Inductance Grade	
160	92 ± 8%	XXXXXX	58118A2	X	Khaki

Dimensions	Uncoated		Coated Limits			Packaging
	(mm)	(in)	(mm)	(in)		
OD (A)	16.6	0.653	17.3	0.680	max	Bulk Pack 4 bags/box Box Qty= 2000 pcs
ID (B)	10.2	0.400	9.52	0.375	min	
HT (C)	6.35	0.250	7.12	0.280	max	

Electrical Characteristics			Physical Characteristics						
Watt Loss @ 100 kHz, 100mT max (mW/cm ³)	DC Bias typical (oersteds)		Voltage Breakdown wire to wire min (V _{AC})	Break Strength min (kg)	Window Area W _A (mm ²)	Cross Section A _e (mm ²)	Path Length L _e (mm)	Volume V _e (mm ³)	Weight (g)
	2000	80%							
	24.0	53.0							

Winding Information					Temperature Rating	
Winding Length Per Turn				Wound Coil Dimensions (mm)		Curie Temp: 500°C
Winding Factor	(mm)	Winding Factor	(mm)	40% Winding Factor		Coating Temp (Continuous up to): 200°C
				OD	18.8	Notes:
				HT	10.1	
				Max OD	23.7	
				Max HT	15.2	
0%	22.1	40%	27.0	Surface Area (mm ²)		
20%	24.6	45%	27.7	Unwound Core		920
25%	25.2	50%	28.4	40% Winding Factor		1,300
30%	25.6	60%	29.8			
35%	26.4	70%	31.5			

Typical DC Bias Performance

