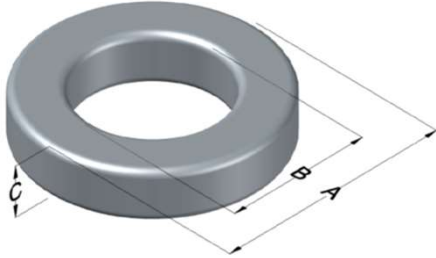




C055884A2

110 Delta Drive
 Pittsburgh, PA 15238
 NAFTA Sales: (1)800-245-3984
 HK Sales : (852)3102-9337
 magnetics@spang.com
 www.mag-inc.com



MPP Permeability (μ)	A_L (nH/T ²)	Core Marking			Coating Color
		Lot Number	Part Number	Inductance Grade	
90	38 ± 8%	XXXXXX	55884A2	X	Grey

Dimensions	Uncoated		Coated Limits			Packaging
	(mm)	(in)	(mm)	(in)		
OD (A)	9.65	0.380	10.29	0.405	max	Bulk Pack 4 bags/box Box Qty= 8000 pcs
ID (B)	4.78	0.188	4.27	0.168	min	
HT (C)	3.18	0.125	3.81	0.150	max	

Electrical Characteristics			Physical Characteristics						
Watt Loss @ 100kHz, 100mT max (mW/cm ³)	DC Bias min (oersteds)		Voltage Breakdown wire to wire min (V _{AC})	Break Strength min (kg)	Window Area W _a (mm ²)	Cross Section A _e (mm ²)	Path Length L _e (mm)	Volume V _e (mm ³)	Weight (g)
	800	80% 30							
			1250	10.0	14.3	7.52	21.8	164	1.32

Winding Information					Temperature Rating	
Winding Length Per Turn				Wound Coil Dimensions (mm)		Curie Temp: 460°C
Winding Factor	(mm)	Winding Factor	(mm)	40% Winding Factor	OD	10.9
					HT	5.61
0%	13.6	40%	15.9	Completely Full Window	Max OD	11.5
20%	14.6	45%	16.2		Max HT	6.81
25%	15.0	50%	16.5	Surface Area (mm ²)		
30%	15.3	60%	17.2	Unwound Core		310
35%	15.6	70%	18.0	40% Winding Factor		410
						Coating Temp (Continuous up to): 200°C
						Notes:

