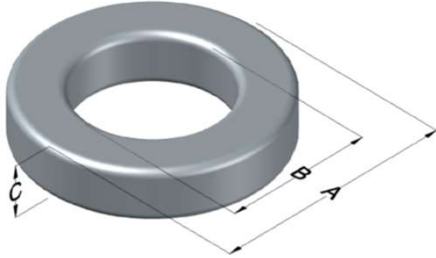




C055825A2

110 Delta Drive
 Pittsburgh, PA 15238
 NAFTA Sales: (1)800-245-3984
 HK Sales : (852)3102-9337
 magnetics@spang.com
 www.mag-inc.com



MPP Permeability (μ)	A_L (nH/T ²)	Core Marking			Coating Color
		Lot Number	Part Number	Inductance Grade	
75	30 \pm 8%	XXXXXX	55825A2	X	Grey

Dimensions	Uncoated		Coated Limits			Packaging
	(mm)	(in)	(mm)	(in)		
OD (A)	6.35	0.250	6.99	0.275	max	Bulk Pack 4 bags/box Box Qty= 10,000 pcs
ID (B)	2.79	0.110	2.29	0.090	min	
HT (C)	2.79	0.110	3.43	0.135	max	

Electrical Characteristics			Physical Characteristics						
Watt Loss @ 100kHz, 100mT max (mW/cm ³)	DC Bias min (oersteds)		Voltage Breakdown wire to wire min (V _{AC})	Break Strength min (kg)	Window Area W _a (mm ²)	Cross Section A _e (mm ²)	Path Length L _e (mm)	Volume V _e (mm ³)	Weight (g)
	80%	50%							
750	35	70	1250	7.3	4.12	4.74	13.6	65	0.55

Winding Information					Temperature Rating	
Winding Length Per Turn				Wound Coil Dimensions (mm)		Curie Temp: 460°C
Winding Factor	(mm)	Winding Factor	(mm)	40% Winding Factor	OD	7.39
					HT	4.23
0%	11.6	40%	12.8	Completely Full Window	Max OD	7.39
20%	12.2	45%	12.9		Max HT	5.03
25%	12.2	50%	13.2	Surface Area (mm ²)		Notes:
30%	12.5	60%	13.5	Unwound Core	170	
35%	12.7	70%	13.9	40% Winding Factor	200	
						Coating Temp (Continuous up to): 200°C

