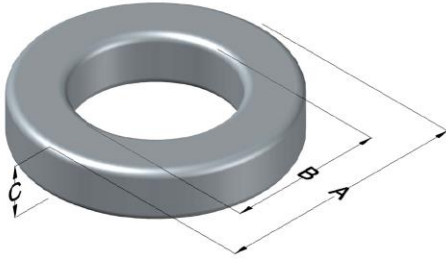




# C055291A2

110 Delta Drive  
 Pittsburgh, PA 15238  
 NAFTA Sales: (1)800-245-3984  
 HK Sales : (852)3102-9337  
 magnetics@spang.com  
 www.mag-inc.com



MPP Permeability ( $\mu$ )	$A_L$ (nH/T <sup>2</sup> )	Core Marking			Coating Color
		Lot Number	Part Number	Inductance Grade	
60	32 ± 8%	XXXXXX	291A2	X	Gray

Dimensions	Uncoated		Coated Limits			Packaging
	(mm)	(in)	(mm)	(in)		
OD (A)	9.65	0.380	10.3	0.405	max	Bulk Pack 4 bags/box Box Qty= 8000 pcs
ID (B)	4.78	0.188	4.26	0.168	min	
HT (C)	3.96	0.156	4.60	0.181	max	

Electrical Characteristics			Physical Characteristics						
Watt Loss @ 100 kHz, 100mT max(mW/cm <sup>3</sup> )	DC Bias min (oersteds)		Voltage Breakdown wire to wire min (V <sub>AC</sub> )	Break Strength min (kg)	Window Area W <sub>A</sub> (mm <sup>2</sup> )	Cross Section A <sub>e</sub> (mm <sup>2</sup> )	Path Length L <sub>e</sub> (mm)	Volume V <sub>e</sub> (mm <sup>3</sup> )	Weight (g)
	80%	50%							
700	50.0	94.0	1000	13.6	14.3	9.45	21.8	206	1.7

Winding Information					Temperature Rating	
Winding Length Per Turn				Wound Coil Dimensions (mm)		Curie Temp: 460°C
Winding Factor	(mm)	Winding Factor	(mm)	40% Winding Factor	OD	11.0
					HT	5.96
0%	15.2	40%	17.4	Completely Full Window	Max OD	13.4
20%	16.4	45%	17.8		Max HT	8.20
25%	16.6	50%	18.1	Surface Area (mm <sup>2</sup> )		
30%	16.9	60%	18.7	Unwound Core	350	
35%	17.2	70%	19.5	40% Winding Factor	450	
Coating Temp (Continuous up to): 200°C						
Notes:						

