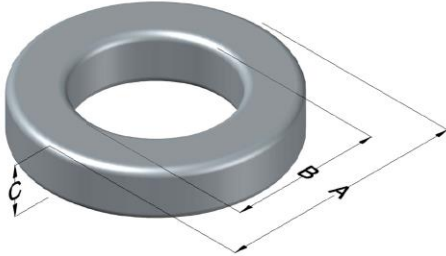




C055286A2

110 Delta Drive
 Pittsburgh, PA 15238
 NAFTA Sales: (1)800-245-3984
 HK Sales : (852)3102-9337
 magnetics@spang.com
 www.mag-inc.com



MPP Permeability (μ)	A_L (nH/T ²)	Core Marking			Coating Color
		Lot Number	Part Number	Inductance Grade	
550	290 \pm 8%	XXXXXX	286A2	X	Gray

Dimensions	Uncoated		Coated Limits			Packaging
	(mm)	(in)	(mm)	(in)		
OD (A)	9.65	0.380	10.3	0.405	max	Bulk Pack 4 bags/box Box Qty= 8000 pcs
ID (B)	4.78	0.188	4.26	0.168	min	
HT (C)	3.96	0.156	4.60	0.181	max	

Electrical Characteristics			Physical Characteristics						
Watt Loss @ 100 kHz, 100mT max(mW/cm ³)	DC Bias min (oersteds)		Voltage Breakdown wire to wire min (V _{AC})	Break Strength min (kg)	Window Area W _A (mm ²)	Cross Section A _e (mm ²)	Path Length L _e (mm)	Volume V _e (mm ³)	Weight (g)
	80%	50%							
2000	1.90	4.20	1000	13.6	14.3	9.45	21.8	206	1.9

Winding Information					Temperature Rating	
Winding Length Per Turn				Wound Coil Dimensions (mm)		Curie Temp: 460°C
Winding Factor	(mm)	Winding Factor	(mm)	40% Winding Factor		Coating Temp (Continuous up to): 200°C
				OD	11.0	
				HT	5.96	Notes:
				Max OD	13.4	
				Max HT	8.20	
0%	15.2	40%	17.4	Surface Area (mm ²)		
20%	16.4	45%	17.8	Unwound Core		
25%	16.6	50%	18.1	40% Winding Factor		
30%	16.9	60%	18.7			
35%	17.2	70%	19.5			

