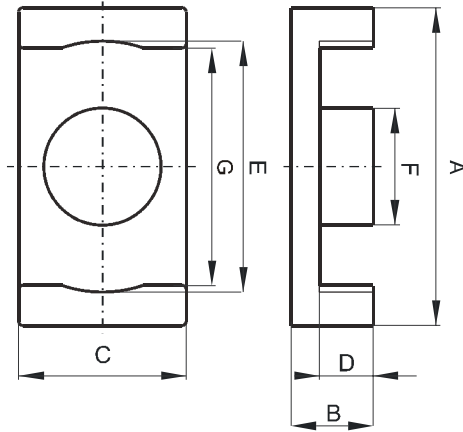


**DIMENSIONS**



(mm)	Nominal:	Tol. min.:	Tol. max.:
<b>A</b>	14.7	-0.4	0.0
<b>B</b>	2.95	-0.05	+ 0.05
<b>C</b>	6.8	-0.2	0.0
<b>D</b>	1.55	0.0	+ 0.2
<b>E</b>	11.6	0.0	+ 0.4
<b>F</b>	4.8	-0.2	0.0
<b>Eff. Parameters</b>			
<b>Ae mm<sup>2</sup></b>	<b>Amin mm<sup>2</sup></b>	<b>le mm</b>	<b>Ve mm<sup>3</sup></b>
17.6	17.3	19.0	333

**INDUCTANCE**

AL value (nH/T <sup>2</sup> )	Test conditions
850 ± 25%	10 kHz, < 0.5 mT, 25 °C

**MARKING**

No marking

**CORE LOSSES**

P <sub>i</sub> max	Test conditions
228 mW/cm <sup>3</sup> (0.076 W/set)	1000 kHz, 30 mT, 100 °C
Ref. 400 mW/cm <sup>3</sup> (0.133 W/set)	3000 kHz, 10 mT, 100 °C