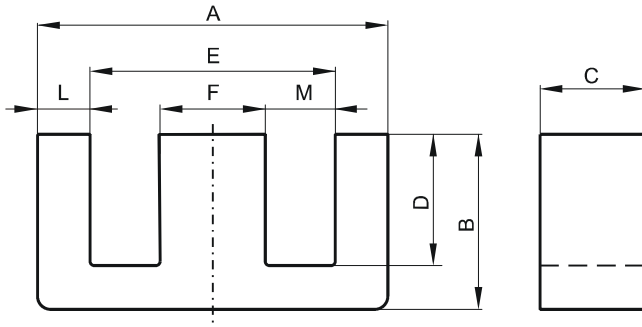


**DIMENSIONS**



(mm)	Nominal:	Tol. min.:	Tol. max.:
<b>A</b>	56.1	-1.0	+ 1.0
<b>B</b>	23.6	-0.25	+ 0.25
<b>C</b>	18.8	-0.25	+ 0.25
<b>D</b>	14.6	-0.13	+ 0.13
<b>E</b>	38.1 Min.		
<b>F</b>	18.8	-0.25	+ 0.25
<b>L</b>	9.5 Nom.		
<b>M</b>	9.03 Nom.		
Eff. Parameters			
Ae mm <sup>2</sup>	Amin mm <sup>2</sup>	le mm	Ve mm <sup>3</sup>
337.0	337.0	107.0	36000

**INDUCTANCE**

**MARKING**

AL value (nH/T <sup>2</sup> )	Test conditions	No marking
Nom: 24000 Min.: 18000	10 kHz, < 0.5 mT, 25 °C	

**LOSS FACTOR**

$\tan \delta/\mu$	Test conditions
$< 7 \cdot 10^{-6}$	10 kHz, < 0.25 mT, 25 °C
$< 106 \cdot 10^{-6}$	100 kHz, < 0.25 mT, 25 °C

**NOTE**

Spec. modifications	Previous	Revised
2007-11-07	Loss factor: General W material	Loss factor: Detail as indicated