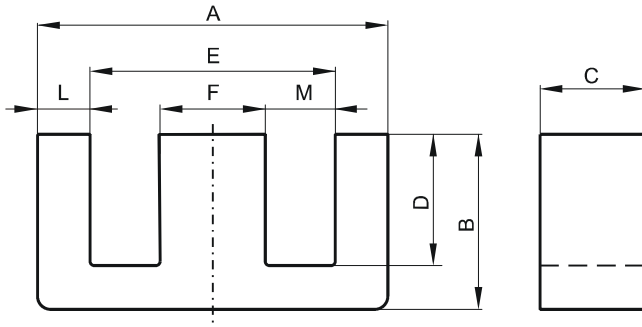


DIMENSIONS



(mm)	Nominal:	Tol. min.:	Tol. max.:
A	25.4	-0.6	+ 0.6
B	9.65	-0.2	+ 0.2
C	12.7	-0.25	+ 0.25
D	6.4 Min.		
E	18.8 Min.		
F	6.35	-0.25	+ 0.25
L	3.6 Max.		
M	6.1 Min.		
Eff. Parameters			
Ae mm²	Amin mm²	le mm	Ve mm³
78.4	76.8	48.0	3760

INDUCTANCE

MARKING

AL value (nH/T²)	Test conditions	No marking
Nom: 13813 Min.: 10360	10 kHz, < 0.5 mT, 25 °C	

LOSS FACTOR

$\tan \delta/\mu$	Test conditions
< 3 · 10 ⁻⁶	10 kHz, < 0.25 mT, 25 °C
< 45 · 10 ⁻⁶	100 kHz, < 0.25 mT, 25 °C

NOTE

Spec. modifications	Previous	Revised
2005-06-22	A=25.15±0.38 B=9.53±0.18 F=6.1±0.13 M=6.22 Min. Loss factor: General W material	A=25.4±0.6 B=9.65±0.2 F=6.35±0.25 M=6.10 Min. Loss factor:Detail as indicated