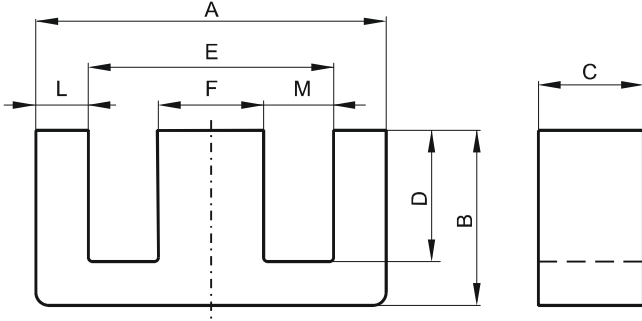


DIMENSIONS



(mm)	Nominal:	Tol. min.:	Tol. max.:
A	25.4	-0.6	+ 0.6
B	9.65	-0.2	+ 0.2
C	6.35	-0.25	+ 0.25
D	6.4 Min.		
E	18.8 Min.		
F	6.35	-0.25	+ 0.25
L	3.3 Nom.		
M	6.1 Min.		
Eff. Parameters			
Ae mm²	Amin mm²	le mm	Ve mm³
39.5	37.0	49.0	1930

INDUCTANCE

AL value (nH/T ²)	Test conditions
Nom: 7660 Min.: 5360	10 kHz, < 0.5 mT, 25 °C

MARKING

No marking

LOSS FACTOR

$\tan \delta/\mu$	Test conditions
< 3.5 · 10 ⁻⁶	10 kHz, < 0.25 mT, 25 °C
< 50 · 10 ⁻⁶	100 kHz, < 0.25 mT, 25 °C

NOTE

Spec. modifications	Previous	Revised
2005-06-22	A=25.5 Max. B=9.7 Max. F=6.1±0.13 L=3.02 Nom. M=6.22 Min.	A=26.0 Max. B=9.85 Max. F=6.35±0.25 L=3.3 Nom. M=6.1 Min.
2010-07-19	Al.-6180 Nom. Al.-4635 Min.	Al.-7660 Nom. Al.-5360 Min.