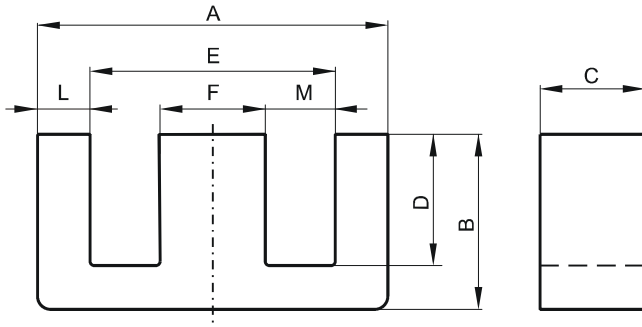


DIMENSIONS



(mm)	Nominal:	Tol. min.:	Tol. max.:
A	19.1	-0.4	+ 0.4
B	8.1	-0.18	+ 0.18
C	9.53	-0.13	+ 0.13
D	5.7 Min.		
E	14.0 Min.		
F	4.75	-0.2	+ 0.2
L	2.38 Ref.		
M	4.79 Ref.		
Eff. Parameters			
Ae mm ²	Amin mm ²	le mm	Ve mm ³
45.5	45.4	40.1	1820

INDUCTANCE

AL value (nH/T ²)	Test conditions
Nom: 8600 Min.: 6450	10 kHz, < 0.5 mT, 25 °C

MARKING

No marking

LOSS FACTOR

$\tan \delta/\mu$	Test conditions
< 3 · 10 ⁻⁶	10 kHz, < 0.25 mT, 25 °C
< 45 · 10 ⁻⁶	100 kHz, < 0.25 mT, 25 °C

NOTE

Spec. modifications	Previous	Revised
2005-06-22	A=19.0 Min. F=4.65 Min. F=4.84 Max. M=4.89±0.013 Al=7420 Min. Loss factor: General W material	A=18.7 Min. F=4.55 Min. F=4.95 Max. M=4.79 Ref. Al=6450 Min. Loss factor: Detail as indicated