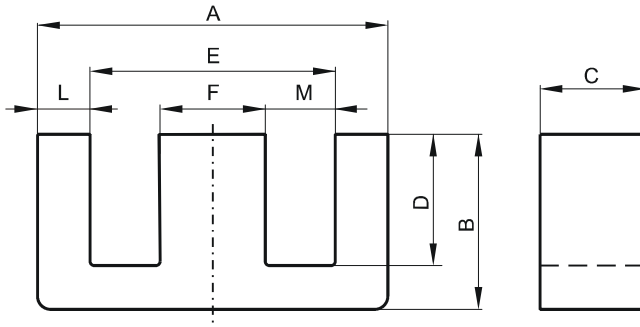


**DIMENSIONS**



(mm)	Nominal:	Tol. min.:	Tol. max.:
<b>A</b>	19.1	-0.4	+ 0.4
<b>B</b>	8.1	-0.13	+ 0.13
<b>C</b>	4.75	-0.2	+ 0.2
<b>D</b>	5.7	-0.13	+ 0.13
<b>E</b>	14.33	-0.33	+ 0.33
<b>F</b>	4.75	-0.2	+ 0.2
<b>L</b>	2.38 Nom.		
<b>M</b>	4.79 Nom.		
Eff. Parameters			
Ae mm <sup>2</sup>	Amin mm <sup>2</sup>	le mm	Ve mm <sup>3</sup>
22.6	22.1	39.9	900

**INDUCTANCE**

AL value (nH/T <sup>2</sup> )	Test conditions
Nom: 4293 Min.: 3220	10 kHz, < 0.5 mT, 25 °C

**MARKING**

No marking
------------

**LOSS FACTOR**

$\tan \delta/\mu$	Test conditions
< 3.5 · 10 <sup>-6</sup>	10 kHz, < 0.25 mT, 25 °C
< 50 · 10 <sup>-6</sup>	100 kHz, < 0.25 mT, 25 °C

**NOTE**

Spec. modifications	Previous	Revised
2005-06-16	A=19.0 Min. C=4.62 Min. C=4.93 Max. F=4.65 Min. F=4.90 Max. Losses: General W material M=4.65 Min.	A=18.7 Min. C=4.55 Min. C=4.95 Max. F=4.55 Min. F=4.95 Max. Losses: Detail as indicated M=4.79 Ref.