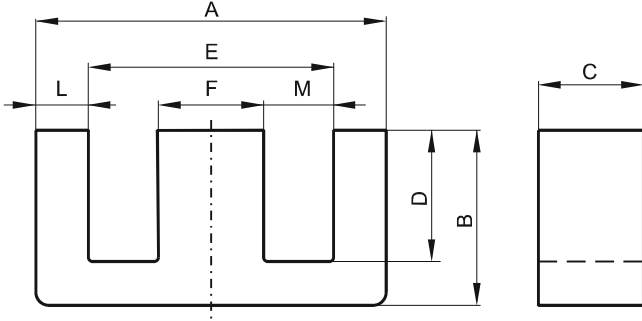


DIMENSIONS



(mm)	Nominal:	Tol. min.:	Tol. max.:
A	56.1	-1.0	+ 1.0
B	23.6	-0.25	+ 0.25
C	18.8	-0.25	+ 0.25
D	14.6	-0.13	+ 0.13
E	38.1 Min.		
F	18.8	-0.25	+ 0.25
L	9.5 Nom.		
M	9.03 Nom.		
Eff. Parameters			
Ae mm²	Amin mm²	le mm	Ve mm³
337.0	337.0	107.0	36000

INDUCTANCE

AL value (nH/T ²)	Test conditions
10440 ± 25%	10 kHz, < 0.5 mT, 25 °C

MARKING

0T45724EC
PXXXXXXXXX

CORE LOSSES

P _i max	Test conditions
< 22.7 W/set (< 630 mW/cm ³)	100 kHz, 200 mT, 25 °C
< 21.6 W/set (< 600 mW/cm ³)	100 kHz, 200 mT, 100 °C

NOTE

Spec. modifications	Previous	Revised
2010-08-11		Issued
2014-01-21	Marking: 0T45724EC PXXXXX	Marking: 0T45724EC PXXXXXXXXX