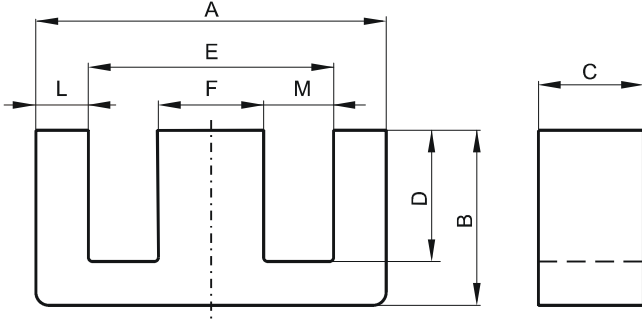


DIMENSIONS



(mm)	Nominal:	Tol. min.:	Tol. max.:
A	56.2	-2.1	0.0
B	27.5	-0.3	+ 0.3
C	21.0	-0.8	0.0
D	18.5	0.0	+ 0.8
E	37.5	0.0	+ 1.5
F	17.2	-0.5	0.0
L	9.35		
M	10.15		
Eff. Parameters			
Ae mm²	Amin mm²	le mm	Ve mm³
353.0	345.0	124.0	44000

INDUCTANCE

AL value (nH/T ²)	Test conditions
8625 ± 25%	10 kHz, < 0.5 mT, 25 °C

MARKING

0T45528EC
PXXXXXXXXX

CORE LOSSES

P _i max	Test conditions
< 27.7 W/set (< 630 mW/cm ³)	100 kHz, 200 mT, 25 °C
< 26.4 W/set (< 600 mW/cm ³)	100 kHz, 200 mT, 100 °C

NOTE

Spec. modifications	Previous	Revised
2010-08-11		Issued
2014-01-21	Marking: 0T45528EC PXXXXX	Marking: 0T45528EC PXXXXXXXXX