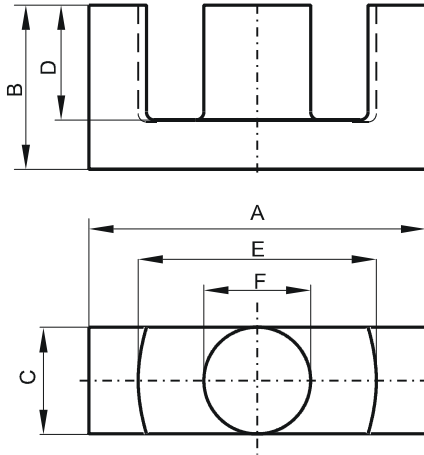


**DIMENSIONS**



(mm)	Nominal:	Tol. min.:	Tol. max.:
<b>A</b>	49.8	-2.2	0.0
<b>B</b>	24.7	-0.2	+ 0.2
<b>C</b>	16.7	-0.6	0.0
<b>D</b>	17.7	0.0	+ 0.8
<b>E</b>	36.1	0.0	+ 1.8
<b>F</b>	16.7	-0.6	0.0
Eff. Parameters			
Ae mm <sup>2</sup>	Amin mm <sup>2</sup>	le mm	Ve mm <sup>3</sup>
211.0	209.0	114.0	24000

**INDUCTANCE**

AL value (nH/T <sup>2</sup> )	Test conditions
5140 ± 25%	10 kHz, < 0.5 mT, 25 °C

**MARKING**

0T44949EC  
PXXXXXXXXX

**CORE LOSSES**

P <sub>i</sub> max	Test conditions
< 14.4 W/set (< 600 mW/cm <sup>3</sup> )	100 kHz, 200 mT, 100 °C
< 15.12 W/set (< 630 mW/cm <sup>3</sup> )	100 kHz, 200 mT, 25 °C

**NOTE**

Spec. modifications	Previous	Revised
2013-03-29		Issued
2013-07-22	Marking: 0T44949EC PXXXXX	Marking: 0T44949EC PXXXXXXXXX