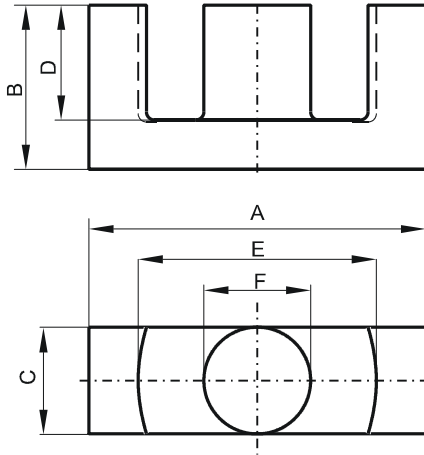


DIMENSIONS



(mm)	Nominal:	Tol. min.:	Tol. max.:
A	45.0	-2.0	0.0
B	22.3	-0.2	+ 0.2
C	15.2	-0.6	0.0
D	16.1	0.0	+ 0.8
E	32.5	0.0	+ 1.6
F	15.2	-0.6	0.0
Eff. Parameters			
Ae mm ²	Amin mm ²	le mm	Ve mm ³
173.0	172.0	103.0	17800

INDUCTANCE

AL value (nH/T ²)	Test conditions
4640 ± 25%	10 kHz, < 0.5 mT, 25 °C

MARKING

T EC

CORE LOSSES

P _i max	Test conditions
< 10.68 W/set (< 600 mW/cm ³)	100 kHz, 200 mT, 100 °C
< 11.21 W/set (< 630 mW/cm ³)	100 kHz, 200 mT, 25 °C

NOTE

Spec. modifications	Previous	Revised
2013-03-29		Issued