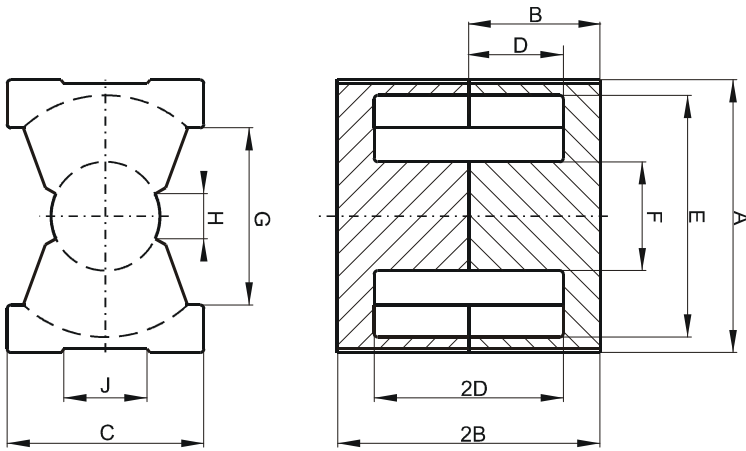


**DIMENSIONS**



(mm)	Nominal:	Tol. min.:	Tol. max.:
<b>A</b>	21.3	-0.4	+ 0.4
<b>B</b>	10.1	-0.1	+ 0.1
<b>2B</b>	20.2	-0.2	+ 0.2
<b>C</b>	14.0	-0.4	+ 0.4
<b>D</b>	7.15	-0.15	+ 0.15
<b>2D</b>	14.3	-0.3	+ 0.3
<b>E</b>	18.0	-0.4	+ 0.4
<b>F</b>	8.8	-0.2	+ 0.2
<b>G</b>	12.0 Min.		
<b>H</b>	4.0 Min.		
<b>J</b>	7.9 Min.		
Eff. Parameters			
<b>Ae mm<sup>2</sup></b>	<b>Amin mm<sup>2</sup></b>	<b>le mm</b>	<b>Ve mm<sup>3</sup></b>
62.6	59.1	45.7	2850

**INDUCTANCE**

AL value (nH/T <sup>2</sup> )	Test conditions
3580 ± 25%	10 kHz, < 0.5 mT, 25 °C

**MARKING**

0T42020UG PXXXXX
---------------------

**CORE LOSSES**

P <sub>i</sub> max	Test conditions
< 1.6 W/set (< 561 mW/cm <sup>3</sup> )	100 kHz, 200 mT, 100 °C
< 1.68 W/set (< 590 mW/cm <sup>3</sup> )	100 kHz, 200 mT, 25 °C

**NOTE**

Spec. modifications	Previous	Revised
2011-11-24		Issued