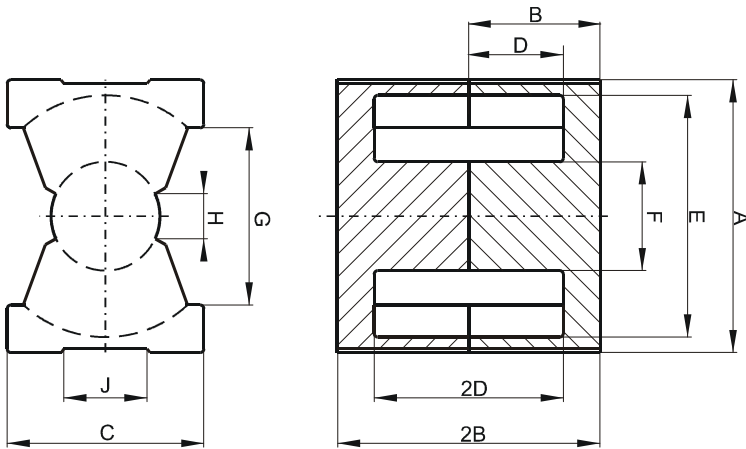


DIMENSIONS



(mm)	Nominal:	Tol. min.:	Tol. max.:
A	21.3	-0.4	+ 0.4
B	8.1	-0.1	+ 0.1
2B	16.2	-0.2	+ 0.2
C	14.0	-0.4	+ 0.4
D	5.15	-0.15	+ 0.15
2D	10.3	-0.3	+ 0.3
E	18.0	-0.4	+ 0.4
F	8.8	-0.2	+ 0.2
G	12.0 Min.		
H	4.0 Min.		
J	8.13		
Eff. Parameters			
Ae mm²	Amin mm²	le mm	Ve mm³
61.9	59.1	37.6	2330

INDUCTANCE

AL value (nH/T ²)	Test conditions
4080 ± 25%	10 kHz, < 0.5 mT, 25 °C

MARKING

0T42016UG PXXXXX

CORE LOSSES

P _i max	Test conditions
< 1.37 W/set (< 590 mW/cm ³)	100 kHz, 200 mT, 25 °C
< 1.3 W/set (< 560 mW/cm ³)	100 kHz, 200 mT, 100 °C

NOTE

Spec. modifications	Previous	Revised
2013-03-29		issued