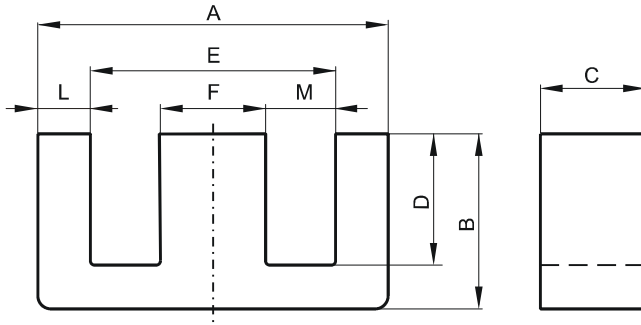


Specification for:

## 0R48020EC

110 Delta Drive  
Pittsburgh, PA 15238  
Phone: 412/696-1333  
Fax: 412/696-0333  
Email: magnetics@spang.com

### DIMENSIONS



(mm)	Nominal:	Tol. min.:	Tol. max.:
<b>A</b>	80.0	-1.6	+ 1.6
<b>B</b>	38.1	-0.3	+ 0.3
<b>C</b>	19.8	-0.4	+ 0.4
<b>D</b>	28.2	-0.3	+ 0.3
<b>E</b>	59.1 Min.		
<b>F</b>	19.8	-0.4	+ 0.4
<b>L</b>	11.25 Nom.		
<b>M</b>	19.45 Min.		
Eff. Parameters			
Ae mm <sup>2</sup>	Amin mm <sup>2</sup>	le mm	Ve mm <sup>3</sup>
392.0	392.0	184.0	72300

### INDUCTANCE

AL value (nH)	Test conditions
Nom: 4673 Min.: 3505	10 kHz, < 0.5 mT, 25 °C

### MARKING

0R48020EC PXXXXX
---------------------

### CORE LOSSES

P <sub>i</sub> max	Test conditions
104 mW/cm <sup>3</sup> (7.5 W/set)	100 kHz, 100 mT, 100 °C
622 mW/cm <sup>3</sup> (45 W/set)	100 kHz, 200 mT, 100 °C

### NOTE

Spec. modifications	Previous	Revised
2005-06-22	A=80.9 Max. A=79.1 Min. C=20.12 Max. C=19.51 Min. D=28.19 Min. E=59.3 Min. L=9.9 Nom. M=19.81 Min. Losses: General R material	A=81.6 Max. A=78.4 Min. C=20.2 Max. C=19.4 Min. D=27.9 Min. E=59.1 Min. L=11.25 Ref. M=19.45 Min. Losses: Detail as indicated