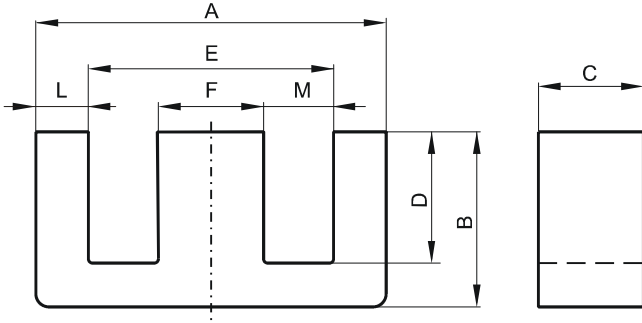


Specification for:

**0R47228EC**

110 Delta Drive  
Pittsburgh, PA 15238  
Phone: 412/696-1333  
Fax: 412/696-0333  
Email: magnetics@spang.com

**DIMENSIONS**



(mm)	Nominal:	Tol. min.:	Tol. max.:
<b>A</b>	72.4	-0.76	+ 0.76
<b>B</b>	27.9	-0.33	+ 0.33
<b>C</b>	19.0	-0.33	+ 0.33
<b>D</b>	17.8 Min.		
<b>E</b>	52.6 Min.		
<b>F</b>	19.0	-0.38	+ 0.38
<b>L</b>	9.53	-0.38	+ 0.38
<b>M</b>	16.9 Min.		
Eff. Parameters			
Ae mm <sup>2</sup>	Amin mm <sup>2</sup>	le mm	Ve mm <sup>3</sup>
368.0	363.0	137.0	50300

**INDUCTANCE**

AL value (nH)	Test conditions
Nom: 5960 Min.: 4470	10 kHz, < 0.5 mT, 25 °C

**MARKING**

0R47228EC PXXXXX
---------------------

**CORE LOSSES**

P <sub>i</sub> max	Test conditions
104 mW/cm <sup>3</sup> (5.2 W/set)	100 kHz, 100 mT, 100 °C
620 mW/cm <sup>3</sup> (31 W/set)	100 kHz, 200 mT, 100 °C

**NOTE**

Spec. modifications	Previous	Revised
2005-06-22	C=18.72 Min. E=52.63 Min. F=18.70 Min. Losses: General R material	C=18.67 Min. E=52.6 Min. F=18.62 Min. Losses: Detail as indicated