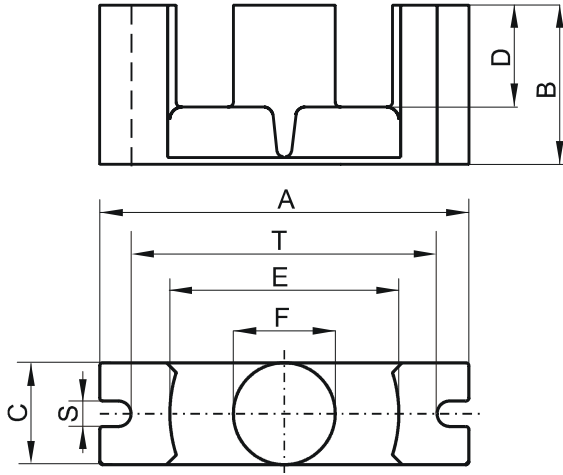


Specification for:

0R47035EC

110 Delta Drive
Pittsburgh, PA 15238
Phone: 412/696-1333
Fax: 412/696-0333
Email: magnetics@spang.com

DIMENSIONS



(mm)	Nominal:	Tol. min.:	Tol. max.:
A	70.0	-1.7	+ 1.7
B	34.5	-0.15	+ 0.15
C	16.4	-0.4	+ 0.4
D	22.75	-0.45	+ 0.45
E	44.5	-1.2	+ 1.2
F	16.4	-0.4	+ 0.4
S	4.75	-0.25	+ 0.25
T	59.6	-1.7	+ 1.7
Eff. Parameters			
Ae mm ²	Amin mm ²	le mm	Ve mm ³
279.0	211.0	144.0	40100

INDUCTANCE

AL value (nH)	Test conditions
Nom: 4413 Min.: 3310	10 kHz, < 0.5 mT, 25 °C

MARKING

0R47035EC PXXXXX

CORE LOSSES

P _i max	Test conditions
85 mW/cm ³ (3.4 W/set)	100 kHz, 100 mT, 100 °C
449 mW/cm ³ (18 W/set)	100 kHz, 200 mT, 100 °C

NOTE

Spec. modifications	Previous	Revised
2005-06-22	A=68.5 Min. A=71.5 Max. C=16.76 Max. D=22.33 Min. E=45.6 Max. E=43.4 Min. F=16.76 Max. T=59.6±1.5 Losses: General R material	A=68.3 Min. A=71.7 Max. C=16.8 Max. D=22.3 Min. E=45.7 Max. E=43.3 Min. F=16.8 Max. T=59.6±1.7 Losses: Detail as indicated