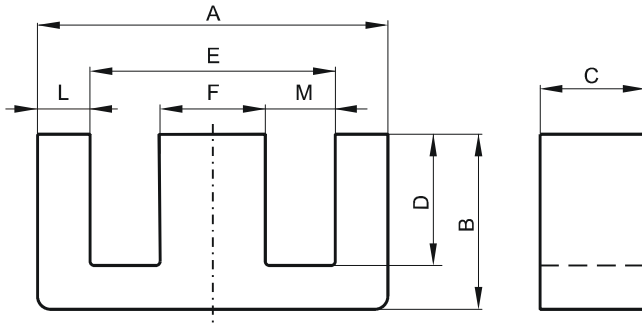


DIMENSIONS



(mm)	Nominal:	Tol. min.:	Tol. max.:
A	65.0	-1.2	+ 1.5
B	32.8	-0.6	0.0
C	27.4	-0.8	0.0
D	22.2	0.0	+ 0.8
E	44.2	0.0	+ 1.8
F	20.0	-0.7	0.0
L	9.95 Ref.		
M	12.72 Ref.		
Eff. Parameters			
Ae mm²	Amin mm²	le mm	Ve mm³
540.0	530.0	147.0	79000

INDUCTANCE

MARKING

AL value (nH/T ²)	Test conditions
Nom: 8600 Min.: 6450	10 kHz, < 0.5 mT, 25 °C

0R46527EC PXXXXX

CORE LOSSES

P _i max	Test conditions
108 mW/cm ³ (8.5 W/set)	100 kHz, 100 mT, 100 °C

NOTE

Spec. modifications	Previous	Revised
2006-10-26	PI-test conditions:(100kHz,100mT,100°C) PI-test conditions:(100kHz,200mT,100°C)	PI-test conditions:(100kHz,100mT,100°C)