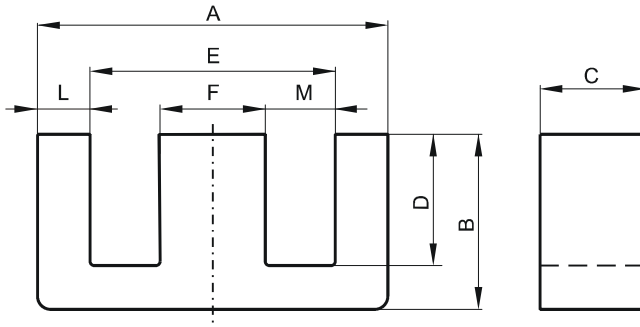


DIMENSIONS



(mm)	Nominal:	Tol. min.:	Tol. max.:
A	59.99	-0.78	+ 0.78
B	22.3	-0.3	+ 0.3
C	15.62	-0.38	+ 0.38
D	13.8 Min.		
E	44.0 Min.		
F	15.62	-0.38	+ 0.38
L	7.7	-0.25	+ 0.25
M	14.49	-0.25	+ 0.25
Eff. Parameters			
Ae mm ²	Amin mm ²	le mm	Ve mm ³
248.0	240.0	110.0	27200

INDUCTANCE

MARKING

AL value (nH/T ²)	Test conditions	R EC
Nom: 5733 Min.: 4300	10 kHz, < 0.5 mT, 25 °C	

CORE LOSSES

P _i max	Test conditions
100 mW/cm ³ (2.7 W/set)	100 kHz, 100 mT, 100 °C
610 mW/cm ³ (17 W/set)	100 kHz, 200 mT, 100 °C

NOTE

Spec. modifications	Previous	Revised
2005-06-22	Losses: General R material	Losses: Detail as indicated