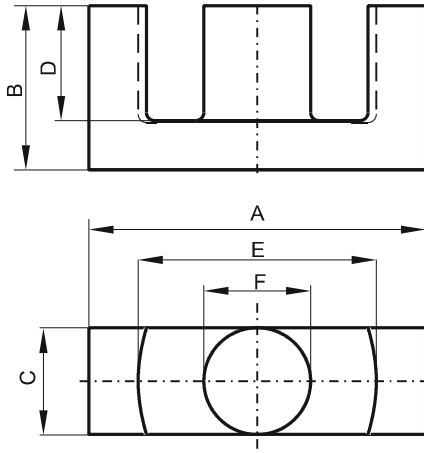


Specification for:

0R45454EC

110 Delta Drive
Pittsburgh, PA 15238
Phone: 412/696-1333
Fax: 412/696-0333
Email: magnetics@spang.com

DIMENSIONS



(mm)	Nominal:	Tol. min.:	Tol. max.:
A	54.5	-1.3	+ 1.3
B	27.6	-0.2	+ 0.2
C	18.9	-0.4	+ 0.4
D	20.2	-0.4	+ 0.4
E	41.2	-1.1	+ 1.1
F	18.9	-0.4	+ 0.4
Eff. Parameters			
Ae mm ²	Amin mm ²	le mm	Ve mm ³
280.0	280.0	127.0	35500

INDUCTANCE

AL value (nH)	Test conditions
Nom: 5200 Min.: 3900	10 kHz, < 0.5 mT, 25 °C

MARKING

0R45454EC PXXXXX

CORE LOSSES

P _i max	Test conditions
101 mW/cm ³ (3.6 W/set)	100 kHz, 100 mT, 100 °C
592 mW/cm ³ (21 W/set)	100 kHz, 200 mT, 100 °C