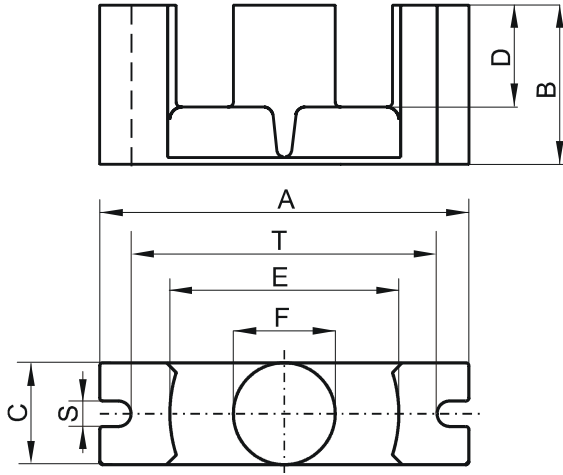


Specification for:

**0R45224EC**

110 Delta Drive  
Pittsburgh, PA 15238  
Phone: 412/696-1333  
Fax: 412/696-0333  
Email: magnetics@spang.com

**DIMENSIONS**



(mm)	Nominal:	Tol. min.:	Tol. max.:
<b>A</b>	52.2	-1.3	+ 1.3
<b>B</b>	24.2	-0.15	+ 0.15
<b>C</b>	13.4	-0.35	+ 0.35
<b>D</b>	15.9	-0.4	+ 0.4
<b>E</b>	33.0	-0.9	+ 0.9
<b>F</b>	13.4	-0.35	+ 0.35
<b>S</b>	3.75	-0.25	+ 0.25
<b>T</b>	44.0	-1.3	+ 1.3
Eff. Parameters			
Ae mm <sup>2</sup>	Amin mm <sup>2</sup>	le mm	Ve mm <sup>3</sup>
180.0	141.0	105.0	18800

**INDUCTANCE**

AL value (nH)	Test conditions
Nom: 3867 : 2900	10 kHz, < 0.5 mT, 25 °C

**MARKING**

R EC
---------

**CORE LOSSES**

P <sub>i</sub> max	Test conditions
85 mW/cm <sup>3</sup> (1.598 W/set)	100 kHz, 100 mT, 100 °C
550 mW/cm <sup>3</sup> (10.34 W/set)	100 kHz, 200 mT, 100 °C

**NOTE**

Spec. modifications	Previous	Revised
2005-06-22	A=53.47 MAX. A=50.93 MIN. C=13.73 MAX. C=13.07 MIN. F=13.73 MAX. F=13.07 MIN. E=32.13 MIN. S=3.75±0.23 T=44.0±1.27 LOSSES: GENERAL R MATERIAL	A=53.5 MAX. A=50.9 MIN. C=13.75 MAX. C=13.05 MIN. F=13.76 MAX. F=13.06 MIN. E=32.1 MIN. S=3.75±0.25 T=44.0±1.3 LOSSES: DETAIL AS INDICATE