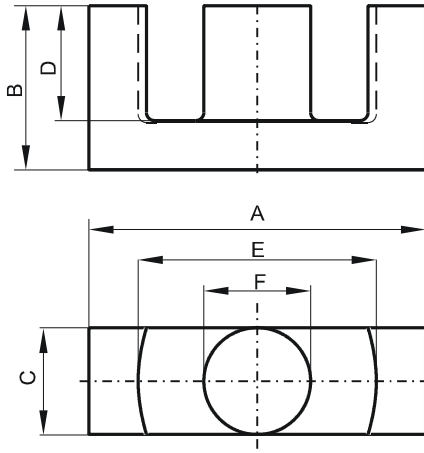


Specification for:

**0R44949EC**

110 Delta Drive  
Pittsburgh, PA 15238  
Phone: 412/696-1333  
Fax: 412/696-0333  
Email: magnetics@spang.com

**DIMENSIONS**



(mm)	Nominal:	Tol. min.:	Tol. max.:
<b>A</b>	49.8	-2.2	0.0
<b>B</b>	24.7	-0.2	+ 0.2
<b>C</b>	16.7	-0.6	0.0
<b>D</b>	17.7	0.0	+ 0.8
<b>E</b>	36.1	0.0	+ 1.8
<b>F</b>	16.7	-0.6	0.0
Eff. Parameters			
Ae mm <sup>2</sup>	Amin mm <sup>2</sup>	le mm	Ve mm <sup>3</sup>
211.0	209.0	114.0	24000

**INDUCTANCE**

AL value (nH)	Test conditions
Nom: 4093 Min.: 3070	10 kHz, < 0.5 mT, 25 °C

**MARKING**

0R44949EC PXXXXX
---------------------

**CORE LOSSES**

P <sub>i</sub> max	Test conditions
96 mW/cm <sup>3</sup> (2.3 W/set)	100 kHz, 100 mT, 100 °C
517 mW/cm <sup>3</sup> (12.4 W/set)	100 kHz, 200 mT, 100 °C

**NOTE**

Spec. modifications	Previous	Revised
2005-06-22	A=47.9 Min. A=49.48 Max. E=36.12 Min. Losses: General R material	A=47.6 Min. A=49.8 Max. E=36.1 Min. Losses: Detail as indicated