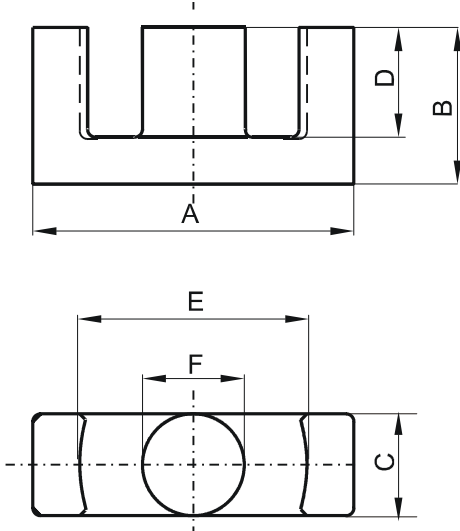


Specification for:

**0R44818EC**

110 Delta Drive  
Pittsburgh, PA 15238  
Phone: 412/696-1333  
Fax: 412/696-0333  
Email: magnetics@spang.com

**DIMENSIONS**



(mm)	Nominal:	Tol. min.:	Tol. max.:
<b>A</b>	48.0	-1.0	+ 1.0
<b>B</b>	18.0	-0.2	+ 0.2
<b>C</b>	17.6	-0.4	+ 0.4
<b>D</b>	11.45	-0.25	+ 0.25
<b>E</b>	36.8	-0.8	+ 0.8
<b>F</b>	17.6	-0.4	+ 0.4
Eff. Parameters			
Ae mm <sup>2</sup>	Amin mm <sup>2</sup>	le mm	Ve mm <sup>3</sup>
232.0	223.0	86.0	19900

**INDUCTANCE**

AL value (nH)	Test conditions
Nom: 6400 Min.: 4800	10 kHz, < 0.5 mT, 25 °C

**MARKING**

0R44818EC PXXXXX
---------------------

**CORE LOSSES**

P <sub>i</sub> max	Test conditions
101 mW/cm <sup>3</sup> (2.0 W/set)	100 kHz, 100 mT, 100 °C
548 mW/cm <sup>3</sup> (10.9 W/set)	100 kHz, 200 mT, 100 °C