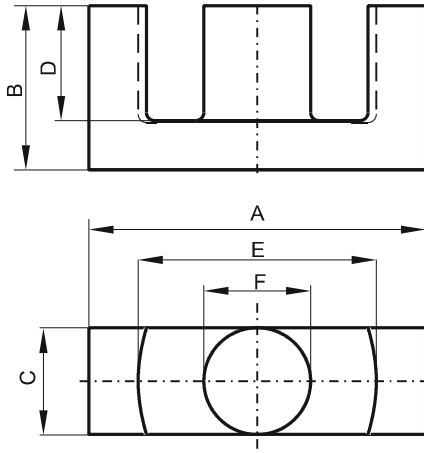


Specification for:

0R44444EC

110 Delta Drive
Pittsburgh, PA 15238
Phone: 412/696-1333
Fax: 412/696-0333
Email: magnetics@spang.com

DIMENSIONS



(mm)	Nominal:	Tol. min.:	Tol. max.:
A	45.0	-2.0	0.0
B	22.3	-0.2	+ 0.2
C	15.2	-0.6	0.0
D	16.1	0.0	+ 0.8
E	32.5	0.0	+ 1.6
F	15.2	-0.6	0.0
Eff. Parameters			
Ae mm ²	Amin mm ²	le mm	Ve mm ³
173.0	172.0	103.0	17800

INDUCTANCE

AL value (nH)	Test conditions
Nom: 3667 Min.: 2750	10 kHz, < 0.5 mT, 25 °C

MARKING

R EC

CORE LOSSES

P _i max	Test conditions
96 mW/cm ³ (1.7 W/set)	100 kHz, 100 mT, 100 °C
528 mW/cm ³ (9.4 W/set)	100 kHz, 200 mT, 100 °C

NOTE

Spec. modifications	Previous	Revised
2005-06-22	D=16.13 Min. Losses: General R material	D=16.1 Min. Losses: Detail as indicated