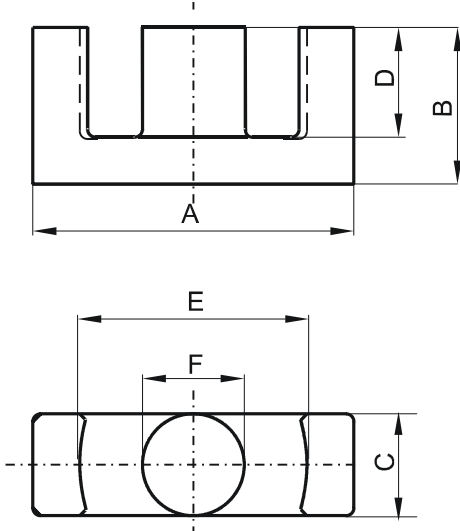


Specification for:

**0R44216EC**

110 Delta Drive  
Pittsburgh, PA 15238  
Phone: 412/696-1333  
Fax: 412/696-0333  
Email:magnetics@spang.com

**DIMENSIONS**



(mm)	Nominal:	Tol. min.:	Tol. max.:
<b>A</b>	42.1	-0.81	+ 0.81
<b>B</b>	21.6	-0.2	+ 0.2
<b>C</b>	14.7	-0.3	+ 0.3
<b>D</b>	15.6 MIN		
<b>E</b>	31.0	-0.58	+ 0.58
<b>F</b>	14.7	-0.3	+ 0.3
Eff. Parameters			
Ae mm <sup>2</sup>	Amin mm <sup>2</sup>	le mm	Ve mm <sup>3</sup>
175.0	166.0	98.7	17300

**INDUCTANCE**

AL value (nH)	Test conditions
Nom: 3840 Min.: 2880	10 kHz, < 0.5 mT, 25 °C

**MARKING**

0R44216EC PXXXXX
---------------------

**CORE LOSSES**

P <sub>i</sub> max	Test conditions
96 mW/cm <sup>3</sup> (1.6608 W/set)	100 kHz, 100 mT, 100 °C
620 mW/cm <sup>3</sup> (10.726 W/set)	100 kHz, 200 mT, 100 °C

**NOTE**

Spec. modifications	Previous	Revised
2005-06-22	A=42.1±0.81 E=31.0±0.58 LOSSES:GENERAL R MATERIAL	A=42.15±0.85 E=31.0±0.6 LOSSES: DETAIL AS INDICATED