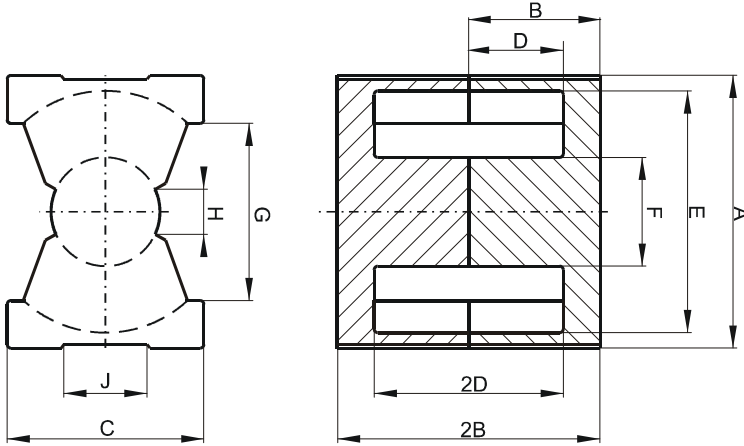


Specification for:

0R44040UG

110 Delta Drive
Pittsburgh, PA 15238
Phone: 412/696-1333
Fax: 412/696-0333
Email:magnetics@spang.com

DIMENSIONS



(mm)	Nominal:	Tol. min.:	Tol. max.:
A	41.5	-0.9	+ 0.9
B	19.9	-0.15	+ 0.15
2B	39.8	-0.3	+ 0.3
C	28.0	-0.6	+ 0.6
D	14.75	-0.2	+ 0.2
2D	29.5	-0.4	+ 0.4
E	37.0	-0.6	+ 0.6
F	14.9	-0.3	+ 0.3
G	29.0	-1.0	+ 1.0
H	6.25	-0.2	+ 0.2
J	15.0	0.0	+ 1.0
Eff. Parameters			
Ae mm²	Amin mm²	le mm	Ve mm³
201.0	175.0	102.0	20500

INDUCTANCE

AL value (nH)	Test conditions
Nom: 4267 Min.: 3200	10 kHz, < 0.5 mT, 25 °C

MARKING

0R44040UG PXXXXX

CORE LOSSES

P _i max	Test conditions
102 mW/cm ³ (2.1 W/set)	100 kHz, 100 mT, 100 °C
615 mW/cm ³ (12.6 W/set)	100 kHz, 200 mT, 100 °C

NOTE

Spec. modifications	Previous	Revised
2005-06-22	A=42.37 Max. B=19.99 Max. 2B=39.98 Max. D=14.6 MIN 2D=29.21 Min. Losses: General R material	A=42.4 Max. B=20.05 Max. 2B=40.1 Max. D=14.55 Min. 2D=29.1 Min. Losses: Detail as indicated