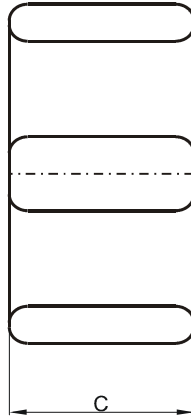
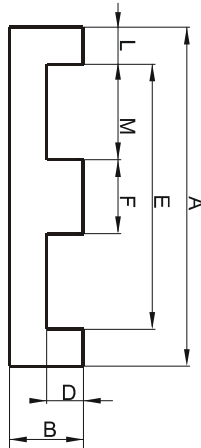


DIMENSIONS



(mm)	Nominal:	Tol. min.:	Tol. max.:
A	40.65	-0.5	+ 0.5
B	8.51	-0.25	+ 0.25
C	10.7	-0.25	+ 0.25
D	4.06	-0.25	+ 0.25
E	30.45	-0.3	+ 0.3
F	10.15	-0.15	+ 0.15
L	5.1 Ref.		
M	10.15 Ref.		
Eff. Parameters			
Ae mm ²	Amin mm ²	le mm	Ve mm ³
101	95.1	51.9	5220

INDUCTANCE

MARKING

AL value (nH/T ²)	Test conditions	R EC
Nom: 4233 Min.: 3175	10 kHz, < 0.5 mT, 25 °C	

CORE LOSSES

P _i max	Test conditions
96 mW/cm ³ (0.5 W/set)	100 kHz, 100 mT, 100 °C
556 mW/cm ³ (2.9 W/set)	100 kHz, 200 mT, 100 °C

NOTE

Spec. modifications	Previous	Revised
2005-06-22	AL=3500 Min. L=5.08±0.13 Losses: General R material	AL=3175 Min. L=5.1 Ref. Losses: Detail as indicated