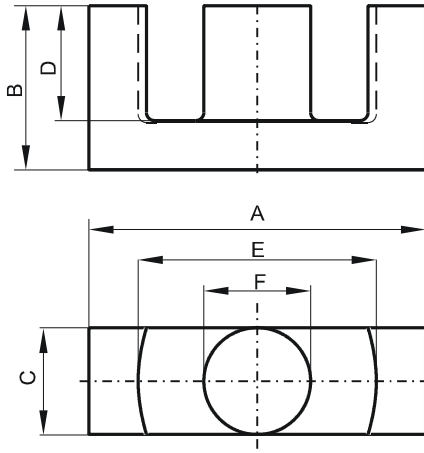


Specification for:

0R43939EC

110 Delta Drive
Pittsburgh, PA 15238
Phone: 412/696-1333
Fax: 412/696-0333
Email: magnetics@spang.com

DIMENSIONS



(mm)	Nominal:	Tol. min.:	Tol. max.:
A	40.0	-1.8	0.0
B	19.8	-0.2	+ 0.2
C	12.8	-0.6	0.0
D	14.2	0.0	+ 0.8
E	29.3	0.0	+ 1.6
F	12.8	-0.6	0.0
Eff. Parameters			
Ae mm ²	Amin mm ²	le mm	Ve mm ³
125.0	123.0	92.2	11500

INDUCTANCE

AL value (nH)	Test conditions
Nom: 2973 Min.: 2230	10 kHz, < 0.5 mT, 25 °C

MARKING

R EC

CORE LOSSES

P _i max	Test conditions
104 mW/cm ³ (1.2 W/set)	100 kHz, 100 mT, 100 °C
522 mW/cm ³ (6.0 W/set)	100 kHz, 200 mT, 100 °C

NOTE

Spec. modifications	Previous	Revised
2005-06-22	D=14.22 Min. Losses: General R material	D=14.2 Min. Losses: Detail as indicated