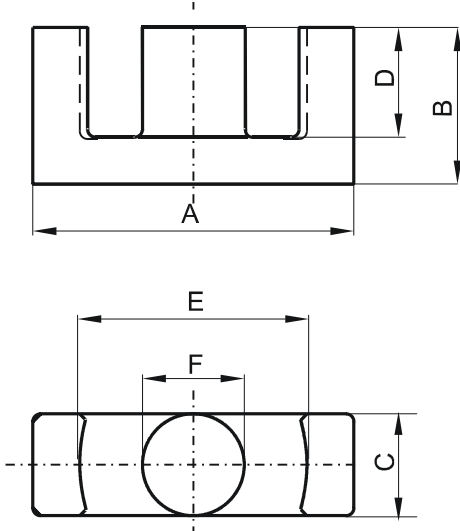


Specification for:

0R43521EC

110 Delta Drive
Pittsburgh, PA 15238
Phone: 412/696-1333
Fax: 412/696-0333
Email: magnetics@spang.com

DIMENSIONS



(mm)	Nominal:	Tol. min.:	Tol. max.:
A	35.0	-0.65	+ 0.65
B	20.7	-0.2	+ 0.2
C	11.4	-0.35	+ 0.35
D	14.75	-0.35	+ 0.35
E	26.15	-0.55	+ 0.55
F	11.3	-0.25	+ 0.25
Eff. Parameters			
Ae mm ²	Amin mm ²	le mm	Ve mm ³
107.0	100.0	90.8	9710

INDUCTANCE

AL value (nH)	Test conditions
Nom: 2693 Min.: 2020	10 kHz, < 0.5 mT, 25 °C

MARKING

R EC

CORE LOSSES

P _i max	Test conditions
98 mW/cm ³ (0.95 W/set)	100 kHz, 100 mT, 100 °C
597 mW/cm ³ (5.8 W/set)	100 kHz, 200 mT, 100 °C

NOTE

Spec. modifications	Previous	Revised
2005-06-16	A=35.5 Max. A=34.5 Min. C=11.56 Max. E=26.62 Max. Losses: General R material	A=35.65 Max. A=34.35 MIN C=11.75 Max. E=26.7 Max. Losses: Detail as indicated