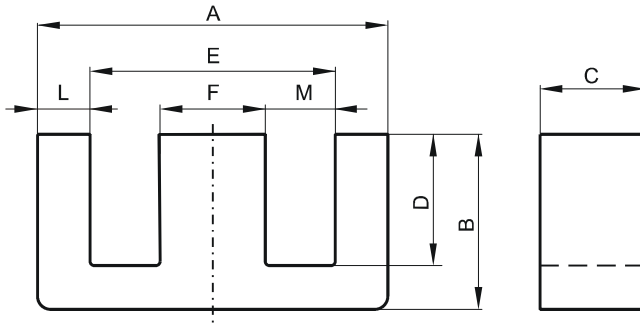


DIMENSIONS



(mm)	Nominal:	Tol. min.:	Tol. max.:
A	34.9	-0.38	+ 0.38
B	20.62	-0.25	+ 0.25
C	9.53	-0.18	+ 0.18
D	15.6 Min.		
E	25.1 Min.		
F	9.53	-0.25	+ 0.25
L	4.75	-0.25	+ 0.25
M	7.95 Nom.		
Eff. Parameters			
Ae mm ²	Amin mm ²	le mm	Ve mm ³
90.6	90.5	94.3	8540

INDUCTANCE

MARKING

AL value (nH/T ²)	Test conditions	R EC
Nom: 1947 Min.: 1460	10 kHz, < 0.5 mT, 25 °C	

CORE LOSSES

P _i max	Test conditions
90 mW/cm ³ (0.8 W/set)	100 kHz, 100 mT, 100 °C
518 mW/cm ³ (4.4 W/set)	100 kHz, 200 mT, 100 °C

NOTE

Spec. modifications	Previous	Revised
2005-06-22	D=15.62 Min. E=25.15 Min. Losses: General R material	D=15.6 Min. E=25.1 MIN Losses: Detail as indicated