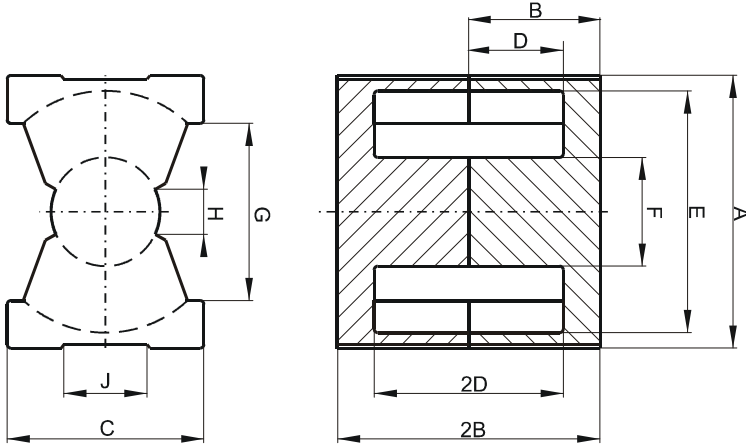


Specification for:

0R43230UG

110 Delta Drive
Pittsburgh, PA 15238
Phone: 412/696-1333
Fax: 412/696-0333
Email: magnetics@spang.com

DIMENSIONS



(mm)	Nominal:	Tol. min.:	Tol. max.:
A	33.0	-0.5	+ 0.5
B	15.15	-0.13	+ 0.13
2B	30.3	-0.25	+ 0.25
C	22.0	-0.5	+ 0.5
D	10.65	-0.15	+ 0.15
2D	21.3	-0.3	+ 0.3
E	27.5	-0.5	+ 0.5
F	13.5	-0.25	+ 0.25
G	19.0 Min.		
H	5.5 Min.		
J	11.6 Min.		
Eff. Parameters			
Ae mm²	Amin mm²	le mm	Ve mm³
167.0	142.0	74.7	12500

INDUCTANCE

AL value (nH)	Test conditions
Nom: 4667 Min.: 3500	10 kHz, < 0.5 mT, 25 °C

MARKING

0R43230UG PXXXXX

CORE LOSSES

P_i max	Test conditions
96 mW/cm ³ (1.2 W/set)	100 kHz, 100 mT, 100 °C
600 mW/cm ³ (7.5 W/set)	100 kHz, 200 mT, 100 °C

NOTE

Spec. modifications	Previous	Revised
2005-06-22	2B=30.07 Min. F=13.72 Max. Losses: General R material	2B=30.05 Min. F=13.75 Max. Losses: Detail as indicated