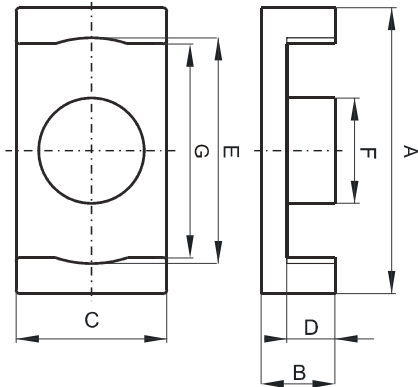


**DIMENSIONS**



(mm)	Nominal:	Tol. min.:	Tol. max.:
<b>A</b>	32.1	-0.45	+ 0.55
<b>B</b>	6.0	-0.13	+ 0.13
<b>C</b>	25.4	-0.4	+ 0.4
<b>D</b>	2.9	-0.25	0.0
<b>E</b>	27.2	-0.4	+ 0.4
<b>F</b>	12.4	-0.15	+ 0.15
<b>G</b>	27.2	-0.4	+ 0.4
Eff. Parameters			
Ae mm <sup>2</sup>	Amin mm <sup>2</sup>	le mm	Ve mm <sup>3</sup>
141.0	121.0	38.2	5400

**INDUCTANCE**

AL value (nH/T <sup>2</sup> )	Test conditions
Nom: 6950 Min.: 5212	10 kHz, < 0.5 mT, 25 °C

**MARKING**

0R43225EC PXXXXXXXX
------------------------

**CORE LOSSES**

P <sub>i</sub> max	Test conditions
< 0.48 W/set (< 89 mW/cm <sup>3</sup> )	100 kHz, 100 mT, 100 °C
< 3 W/set (< 556 mW/cm <sup>3</sup> )	100 kHz, 200 mT, 100 °C

**NOTE**

Spec. modifications	Previous	Revised
2014-07-03	Marking: 0R43225EC PXXXXX	Marking: 0R43225EC PXXXXXXXX