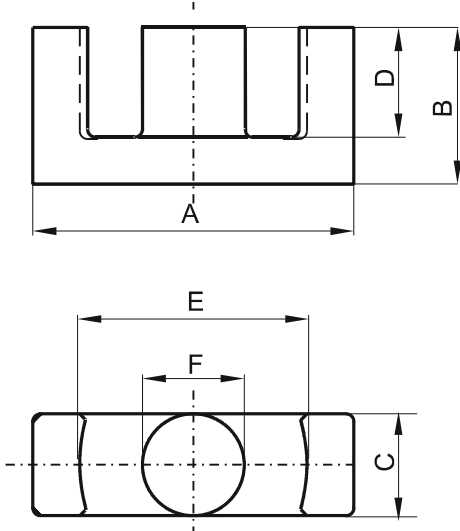


Specification for:

**0R42814EC**

110 Delta Drive  
Pittsburgh, PA 15238  
Phone: 412/696-1333  
Fax: 412/696-0333  
Email: magnetics@spang.com

**DIMENSIONS**



(mm)	Nominal:	Tol. min.:	Tol. max.:
<b>A</b>	28.55	-0.55	+ 0.55
<b>B</b>	14.0	-0.2	+ 0.2
<b>C</b>	11.4	-0.35	+ 0.35
<b>D</b>	9.75	-0.4	+ 0.4
<b>E</b>	21.75	-0.5	+ 0.5
<b>F</b>	9.9	-0.25	+ 0.25
<b>G</b>	0.0	0.0	0.0
Eff. Parameters			
Ae mm <sup>2</sup>	Amin mm <sup>2</sup>	le mm	Ve mm <sup>3</sup>
81.4	77.0	64.0	5260

**INDUCTANCE**

AL value (nH)	Test conditions
Nom: 2700 Min.: 2025	10 kHz, < 0.5 mT, 25 °C

**MARKING**

R EC
---------

**CORE LOSSES**

P <sub>i</sub> max	Test conditions
96 mW/cm <sup>3</sup> (0.50496 W/set)	100 kHz, 100 mT, 100 °C
620 mW/cm <sup>3</sup> (3.2612 W/set)	100 kHz, 200 mT, 100 °C