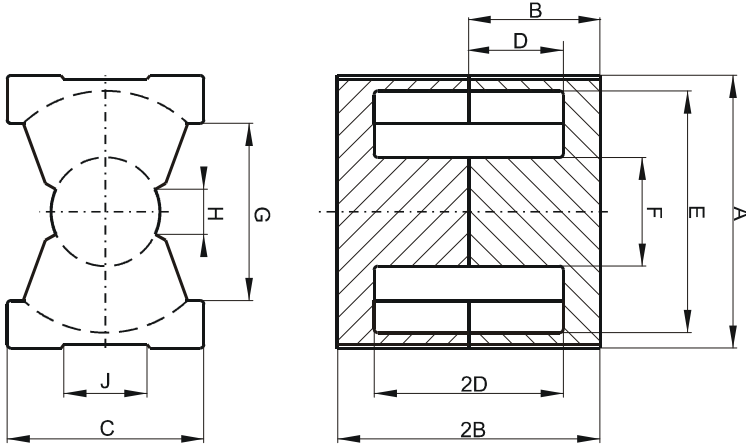


Specification for:

0R42625UG

110 Delta Drive
Pittsburgh, PA 15238
Phone: 412/696-1333
Fax: 412/696-0333
Email: magnetics@spang.com

DIMENSIONS



(mm)	Nominal:	Tol. min.:	Tol. max.:
A	27.3	-0.46	+ 0.46
B	12.35	-0.13	+ 0.13
2B	24.7	-0.25	+ 0.25
C	19.0	-0.45	+ 0.45
D	8.05	-0.15	+ 0.15
2D	16.1	-0.3	+ 0.3
E	22.5	-0.46	+ 0.46
F	12.0	-0.2	+ 0.2
G	15.5 Min.		
H	6.0 Min.		
J	10.5 Min.		
Eff. Parameters			
Ae mm ²	Amin mm ²	le mm	Ve mm ³
120.0	108.0	54.3	6530

INDUCTANCE

AL value (nH)	Test conditions
Nom: 4600 Min.: 3450	10 kHz, < 0.5 mT, 25 °C

MARKING

0R42625UG PXXXXX

CORE LOSSES

P _i max	Test conditions
95 mW/cm ³ (0.62 W/set)	100 kHz, 100 mT, 100 °C
613 mW/cm ³ (4.0 W/set)	100 kHz, 200 mT, 100 °C

NOTE

Spec. modifications	Previous	Revised
2005-06-22	A=27.71 Max. B=12.24 Min. 2B=24.49 Min. Losses: General R material	A=27.76 Max. B=12.22 Min. 2B=24.45 Min. Losses: Detail as indicated