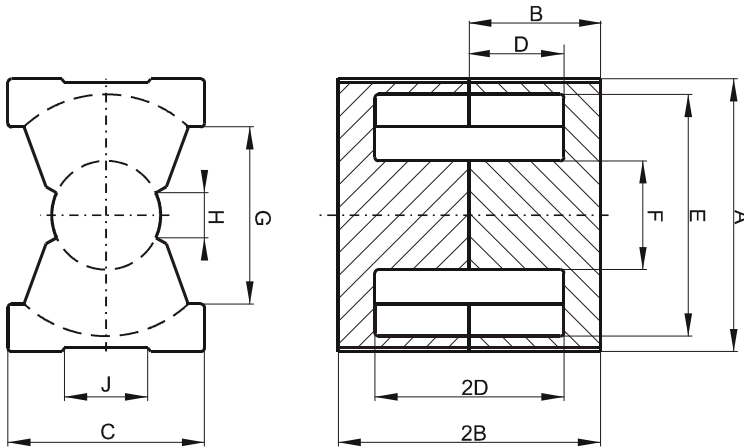


DIMENSIONS



(mm)	Nominal:	Tol. min.:	Tol. max.:
A	27.3	-0.46	+ 0.46
B	10.1	-0.13	+ 0.13
2B	20.2	-0.25	+ 0.25
C	19.0	-0.45	+ 0.45
D	5.75	-0.15	+ 0.15
2D	11.5	-0.3	+ 0.3
E	22.5	-0.45	+ 0.45
F	12.0	-0.2	+ 0.2
G	15.5 Min.		
H	5.5 Min.		
J	10.0 Min.		
Eff. Parameters			
Ae mm ²	Amin mm ²	le mm	Ve mm ³
121.0	109.0	45.0	5470

INDUCTANCE

MARKING

AL value (nH/T ²)	Test conditions	
Nom: 5560 Min.: 4170	10 kHz, < 0.5 mT, 25 °C	0R42620UG PXXXXX

CORE LOSSES

P _i max	Test conditions
< 0.52 W/set (< 95 mW/cm ³)	100 kHz, 100 mT, 100 °C
< 3.3 W/set (< 603 mW/cm ³)	100 kHz, 200 mT, 100 °C

NOTE

Spec. modifications	Previous	Revised
2005-06-22	A=27.71 Max. B=20.42 Max. Losses: General R material	A=27.76 Max. B=20.45 Max. Losses: Detail as indicated