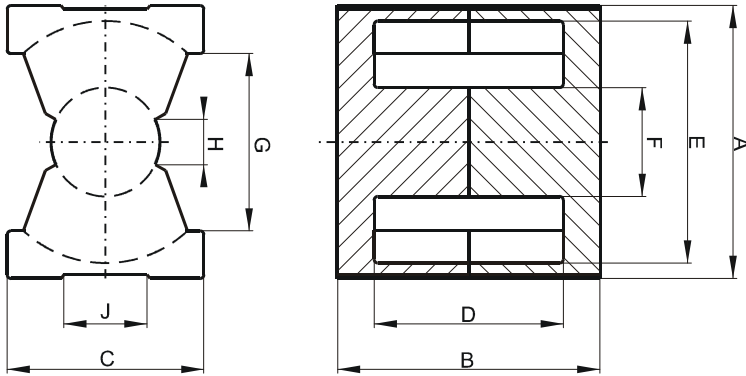


Specification for:

**0R42614UG**

110 Delta Drive  
Pittsburgh, PA 15238  
Phone: 412/696-1333  
Fax: 412/696-0333  
Email: magnetics@spang.com

**DIMENSIONS**



(mm)	Nominal:	Tol. min.:	Tol. max.:
<b>A</b>	27.2	-0.45	+ 0.45
<b>B</b>	5.94	-0.1	+ 0.1
<b>2B</b>	11.9	-0.2	+ 0.2
<b>C</b>	19.0	-0.45	+ 0.45
<b>D</b>	3.4 MIN		
<b>2D</b>	6.7 MIN		
<b>E</b>	22.05 MIN		
<b>F</b>	12.2 MAX		
<b>G</b>	15.5 MIN		
<b>Eff. Parameters</b>			
<b>Ae mm<sup>2</sup></b>	<b>Amin mm<sup>2</sup></b>	<b>le mm</b>	<b>Ve mm<sup>3</sup></b>
86.4	70.9	33.3	2880

**INDUCTANCE**

AL value (nH)	Test conditions
Nom: 5613 Min.: 4210	10 kHz, < 0.5 mT, 25 °C

**MARKING**

0R42614UG PXXXXX
---------------------

**CORE LOSSES**

P <sub>i</sub> max	Test conditions
86 mW/cm <sup>3</sup> (0.24768 W/set)	100 kHz, 100 mT, 100 °C
530 mW/cm <sup>3</sup> (1.5264 W/set)	100 kHz, 200 mT, 100 °C

**NOTE**

Spec. modifications	Previous	Revised
2005-06-22	LOSSES:GENERAL R MATERIAL	LOSSES: DETAIL AS INDICATED