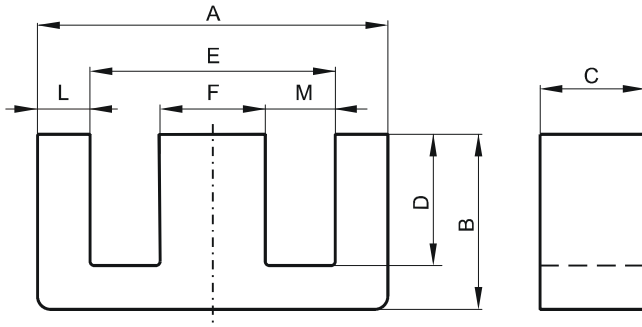


DIMENSIONS



(mm)	Nominal:	Tol. min.:	Tol. max.:
A	25.4	-0.38	+ 0.38
B	15.9	-0.25	+ 0.25
C	12.7	-0.25	+ 0.25
D	12.6 Min.		
E	18.8 Min.		
F	6.35	-0.13	+ 0.13
L	3.12	-0.13	+ 0.13
M	6.4	-0.25	+ 0.25
Eff. Parameters			
Ae mm ²	Amin mm ²	le mm	Ve mm ³
80.2	79.4	73.5	5900

INDUCTANCE

MARKING

AL value (nH/T ²)	Test conditions	R
Nom: 2307 Min.: 1730	10 kHz, < 0.5 mT, 25 °C	EC

CORE LOSSES

P _i max	Test conditions
90 mW/cm ³ (0.53 W/set)	100 kHz, 100 mT, 100 °C
518 mW/cm ³ (3.1 W/set)	100 kHz, 200 mT, 100 °C

NOTE

Spec. modifications	Previous	Revised
2005-06-16	B=16.13 Max. E=18.85 Min. Losses: General R material	B=16.15 Max. E=18.8 Min. Losses: Detail as indicated