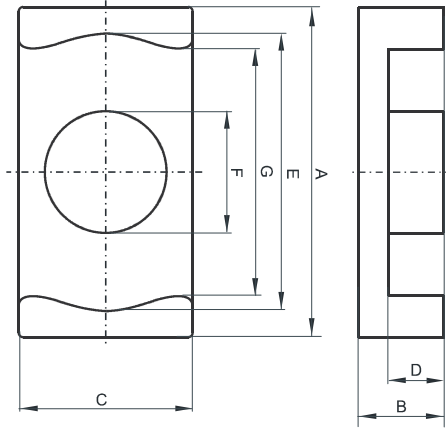


Specification for:

**0R42521EC**

110 Delta Drive  
Pittsburgh, PA 15238  
Phone: 412/696-1333  
Fax: 412/696-0333  
Email: magnetics@spang.com

**DIMENSIONS**



(mm)	Nominal:	Tol. min.:	Tol. max.:
<b>A</b>	25.0	-0.4	+ 0.4
<b>B</b>	8.0	-0.1	+ 0.1
<b>C</b>	18.0	-0.3	+ 0.3
<b>D</b>	5.15	-0.15	+ 0.15
<b>E</b>	22.0	-0.4	+ 0.4
<b>F</b>	11.0	-0.2	+ 0.2
<b>G</b>	15.2	-0.7	+ 0.7
<b>Eff. Parameters</b>			
<b>Ae mm<sup>2</sup></b>	<b>Amin mm<sup>2</sup></b>	<b>le mm</b>	<b>Ve mm<sup>3</sup></b>
100.0	95.0	41.4	4145

**INDUCTANCE**

<b>AL value (nH)</b>	<b>Test conditions</b>
Nom: 5440 Min.: 4080	10 kHz, < 0.5 mT, 25 °C

**MARKING**

0R42521EC PXXXXX
---------------------

**CORE LOSSES**

<b>P<sub>i</sub> max</b>	<b>Test conditions</b>
89 mW/cm <sup>3</sup> (0.37 W/set)	100 kHz, 100 mT, 100 °C
603 mW/cm <sup>3</sup> (2.5 W/set)	100 kHz, 200 mT, 100 °C