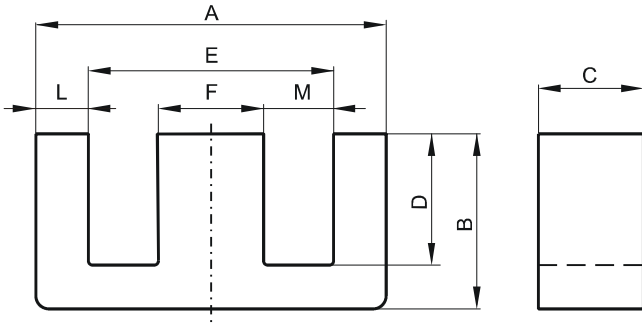


DIMENSIONS



(mm)	Nominal:	Tol. min.:	Tol. max.:
A	25.4	-0.6	+ 0.6
B	9.65	-0.2	+ 0.2
C	12.7	-0.25	+ 0.25
D	6.4 Min.		
E	18.8 Min.		
F	6.35	-0.25	+ 0.25
L	3.6 Max.		
M	6.1 Min.		
Eff. Parameters			
Ae mm ²	Amin mm ²	le mm	Ve mm ³
78.4	76.8	48.0	3760

INDUCTANCE

AL value (nH)	Test conditions
Nom: 3533 Min.: 2650	10 kHz, < 0.5 mT, 25 °C

MARKING

R EC

CORE LOSSES

P _i max	Test conditions
90 mW/cm ³ (0.34 W/set)	100 kHz, 100 mT, 100 °C
532 mW/cm ³ (2.0 W/set)	100 kHz, 200 mT, 100 °C

NOTE

Spec. modifications	Previous	Revised
2005-06-22	A=25.15±0.38 B=9.53±0.18 F=6.1±0.13 M=6.22 Min. Losses: General R material	A=25.4±0.6 B=9.65±0.2 F=6.35±0.25 M=6.10 Min. Losses: Detail as indicated