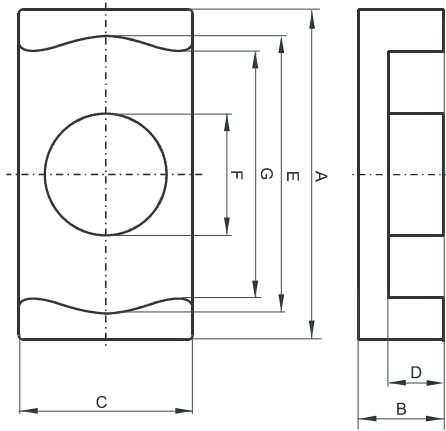


**DIMENSIONS**



(mm)	Nominal:	Tol. min.:	Tol. max.:
<b>A</b>	25.0	-0.4	+ 0.4
<b>B</b>	5.6	-0.1	+ 0.1
<b>C</b>	18.0	-0.3	+ 0.3
<b>D</b>	2.75	-0.15	+ 0.15
<b>E</b>	22.0	-0.4	+ 0.4
<b>F</b>	11.0	-0.2	+ 0.2
<b>G</b>	15.2	-0.7	+ 0.7
<b>Eff. Parameters</b>			
<b>Ae mm<sup>2</sup></b>	<b>Amin mm<sup>2</sup></b>	<b>le mm</b>	<b>Ve mm<sup>3</sup></b>
91.8	86.4	33.8	3100

**INDUCTANCE**

AL value (nH/T <sup>2</sup> )	Test conditions
Nom: 5700 Min.: 4275	10 kHz, < 0.5 mT, 25 °C

**MARKING**

0REC 42517
---------------

**CORE LOSSES**

P <sub>i</sub> max	Test conditions
< 0.27 W/set (< 89 mW/cm <sup>3</sup> )	100 kHz, 100 mT, 100 °C
< 1.83 W/set (< 591 mW/cm <sup>3</sup> )	100 kHz, 200 mT, 100 °C

**NOTE**

Spec. modifications	Previous	Revised
2011-12-15	Ae=89.7 mm <sup>2</sup> Amin=82.8 mm <sup>2</sup> Le=26.4 mm Ve=2370 mm <sup>3</sup> Al.=7021 Nom. Al.=5266 Min. Pv< 0.21 W/set (100 kHz, 100 mT, 100°C) Pv< 1.4 W/set (100 kHz, 200 mT, 100°C)	Ae=91.8 mm <sup>2</sup> Amin=86.4 mm <sup>2</sup> Le=33.8 mm Ve=3100 mm <sup>3</sup> Al.=5700 Nom. Al.=4275 Min. Pv< 0.27 W/set (100 kHz, 100 mT, 100°C) Pv< 1.83 W/set (100 kHz, 200 mT, 100°C)
2015-09-22	Marking: 0R42517EC PXXXXXXXXX	Marking: 0REC 42517