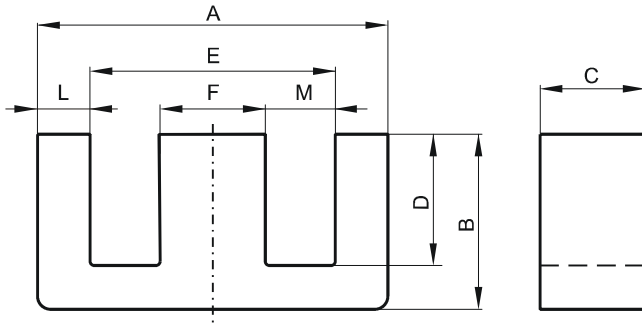


**DIMENSIONS**



(mm)	Nominal:	Tol. min.:	Tol. max.:
<b>A</b>	25.0	-0.7	+ 0.8
<b>B</b>	12.8	-0.4	0.0
<b>C</b>	7.5	-0.6	0.0
<b>D</b>	8.7	0.0	+ 0.6
<b>E</b>	17.5	0.0	+ 0.9
<b>F</b>	7.5	-0.5	0.0
<b>L</b>	3.55 Ref.		
<b>M</b>	5.35 Ref.		
<b>Eff. Parameters</b>			
<b>Ae mm<sup>2</sup></b>	<b>Amin mm<sup>2</sup></b>	<b>le mm</b>	<b>Ve mm<sup>3</sup></b>
51.8	51.8	57.8	2990

**INDUCTANCE**

<b>AL value (nH/T<sup>2</sup>)</b>	<b>Test conditions</b>
Nom: 1900 Min.: 1425	10 kHz, < 0.5 mT, 25 °C

**MARKING**

R EC
---------

**CORE LOSSES**

<b>P<sub>i</sub> max</b>	<b>Test conditions</b>
100 mW/cm <sup>3</sup> (0.3 W/set)	100 kHz, 100 mT, 100 °C
502 mW/cm <sup>3</sup> (1.5 W/set)	100 kHz, 200 mT, 100 °C