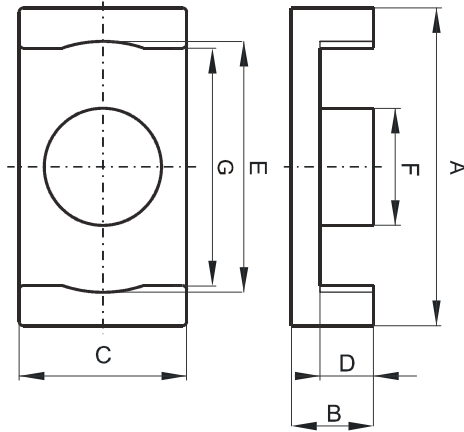


DIMENSIONS



(mm)	Nominal:	Tol. min.:	Tol. max.:
A	18.0	-0.35	+ 0.35
B	3.15	-0.1	+ 0.1
C	9.7	-0.2	+ 0.2
D	1.6	-0.1	+ 0.1
E	15.6	-0.3	+ 0.3
F	6.2	-0.15	+ 0.15
G	13.5 Min.		
Eff. Parameters			
Ae mm ²	Amin mm ²	le mm	Ve mm ³
30.2	30.1	22.1	667

INDUCTANCE

MARKING

AL value (nH/T ²)	Test conditions	R
Nom: 2623 Min.: 1967	10 kHz, < 0.5 mT, 25 °C	EC

CORE LOSSES

P _i max	Test conditions
78 mW/cm ³ (0.052 W/set)	100 kHz, 100 mT, 100 °C
525 mW/cm ³ (0.35 W/set)	100 kHz, 200 mT, 100 °C