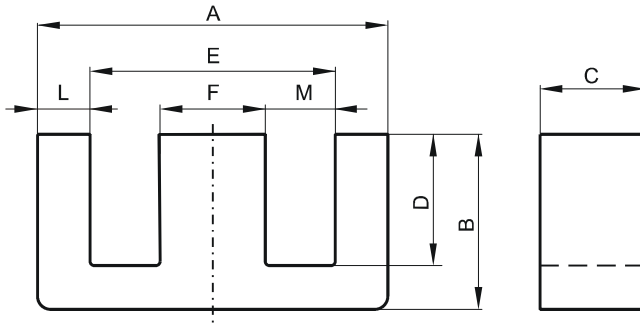


DIMENSIONS



(mm)	Nominal:	Tol. min.:	Tol. max.:
A	16.8	-0.38	+ 0.38
B	7.11	-0.18	+ 0.18
C	3.56	-0.12	+ 0.12
D	3.94 Min.		
E	10.4 Min.		
F	3.56	-0.13	+ 0.13
L	2.79 Nom.		
M	3.63 Min.		
Eff. Parameters			
Ae mm ²	Amin mm ²	le mm	Ve mm ³
16.6	12.6	30.4	505

INDUCTANCE

MARKING

AL value (nH/T ²)	Test conditions	No marking
Nom: 1013 Min.: 760	10 kHz, < 0.5 mT, 25 °C	

CORE LOSSES

P _i max	Test conditions
89 mW/cm ³ (0.045 W/set)	100 kHz, 100 mT, 100 °C
535 mW/cm ³ (0.27 W/set)	100 kHz, 200 mT, 100 °C

NOTE

Spec. modifications	Previous	Revised
2005-06-22	A=17.15 Max. Losses: General R material	A=17.18 Max. Losses: Detail as indicated