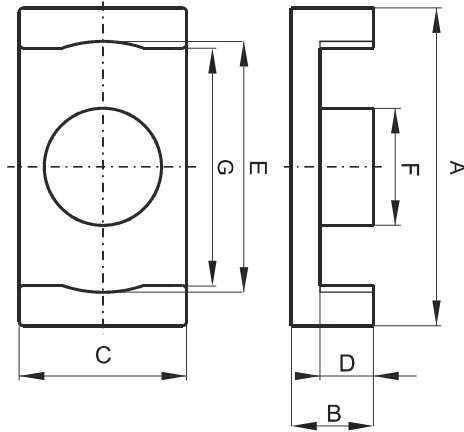


**DIMENSIONS**



(mm)	Nominal:	Tol. min.:	Tol. max.:
<b>A</b>	11.0	-0.35	0.0
<b>B</b>	2.45	-0.05	+ 0.05
<b>C</b>	6.0	-0.2	0.0
<b>D</b>	1.5	0.0	+ 0.15
<b>E</b>	8.7	0.0	+ 0.3
<b>F</b>	4.25	-0.25	0.0
<b>G</b>	8.0	0.0	+ 0.2
<b>Eff. Parameters</b>			
<b>Ae mm<sup>2</sup></b>	<b>Amin mm<sup>2</sup></b>	<b>le mm</b>	<b>Ve mm<sup>3</sup></b>
11.9	10.3	14.7	174

**INDUCTANCE**

**MARKING**

<b>AL value (nH/T<sup>2</sup>)</b>	<b>Test conditions</b>	<b>No marking</b>
Nom: 1400 Min.: 1050	10 kHz, < 0.5 mT, 25 °C	

**CORE LOSSES**

<b>P<sub>i</sub> max</b>	<b>Test conditions</b>
103 mW/cm <sup>3</sup> (0.018 W/set)	100 kHz, 100 mT, 100 °C
575 mW/cm <sup>3</sup> (0.1 W/set)	100 kHz, 200 mT, 100 °C