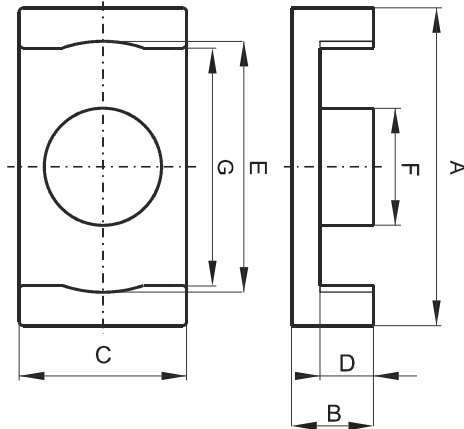


DIMENSIONS



(mm)	Nominal:	Tol. min.:	Tol. max.:
A	9.5	-0.3	0.0
B	2.45	-0.05	+ 0.05
C	5.0	-0.2	0.0
D	1.6	0.0	+ 0.15
E	7.5	0.0	+ 0.4
F	3.5	-0.2	0.0
G	7.1	0.0	+ 0.35
Eff. Parameters			
Ae mm ²	Amin mm ²	le mm	Ve mm ³
8.47	7.6	14.2	120

INDUCTANCE

MARKING

AL value (nH/T ²)	Test conditions	No marking
Nom: 973 Min.: 730	10 kHz, < 0.5 mT, 25 °C	

CORE LOSSES

P _i max	Test conditions
92 mW/cm ³ (0.011 W/set)	100 kHz, 100 mT, 100 °C
600 mW/cm ³ (0.072 W/set)	100 kHz, 200 mT, 100 °C

NOTE

Spec. modifications	Previous	Revised
2005-06-22	E=7.75 Max. G=7.3 Max. Losses: General R material	E=7.9 Max. G=7.45 Max. Losses: Detail as indicated