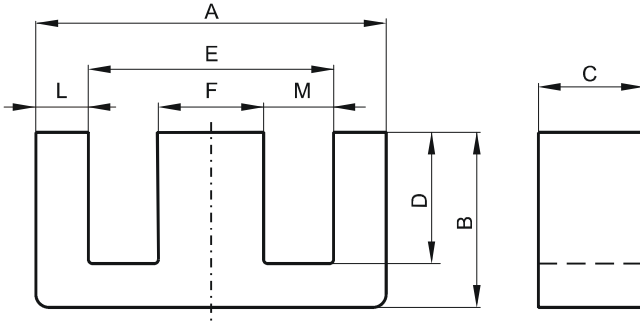


DIMENSIONS



(mm)	Nominal:	Tol. min.:	Tol. max.:
A	70.5	-1.0	+ 1.0
B	33.2	-0.5	0.0
C	32.0	-0.8	0.0
D	21.9	0.0	+ 0.7
E	48.0	0.0	+ 1.5
F	22.0	-0.7	0.0
L	11.25 Nom.		
M	13.0 Nom.		
Eff. Parameters			
Ae mm²	Amin mm²	le mm	Ve mm³
683	676	149	102000

INDUCTANCE

AL value (nH/T ²)	Test conditions
Nom: 11600 Min.: 8700	10 kHz, < 0.5 mT, 25 °C

MARKING

0P47133EC PXXXXX

CORE LOSSES

P _i max	Test conditions
< 15.5 W/set (< 152 mW/cm ³)	100 kHz, 100 mT, 100 °C